

# ELECTRIC TRANSMISSION FACTS &

## FIGURES

Compiled by  
**WIRES**



The grid was largely built after WWII from designs that date back to **Thomas Edison**



Transmission represents only **10-15%** of your monthly utility bill.



The grid is currently valued at over **\$876B**



As with roads and highways, this **infrastructure** requires continuous investment

**D+**

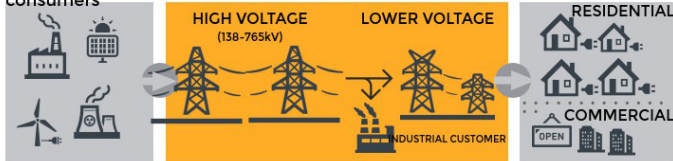
The grade assigned by the ACSE in 2013 for America's infrastructure

## GRID BASICS

Transmission is the critical link between you and energy producers

### The Grid:

An interconnected network for delivering electricity from suppliers to consumers



### GENERATION

Generating stations and renewable energy sources that produce electrical power

### TRANSMISSION

High-voltage transmission lines carry power from distant sources to demand centers

### DISTRIBUTION

Distribution lines connect individual customers (residential and commercial)

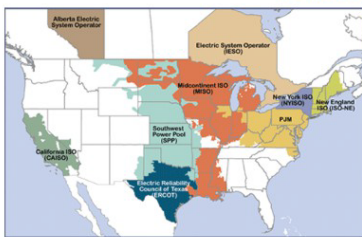
## BY THE NUMBERS

**7,000** power plants send electricity over **450,000** miles of high-voltage transmission lines

and **2.5 million** miles of feeder lines to **3,300** utilities serving

**150 million** customers like you!

## RELIABILITY

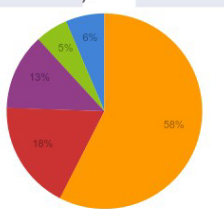


The grid is organized around **9 Regional Transmission Organizations (RTOs)** which ensure the grid is stable and provides reliable power to customers

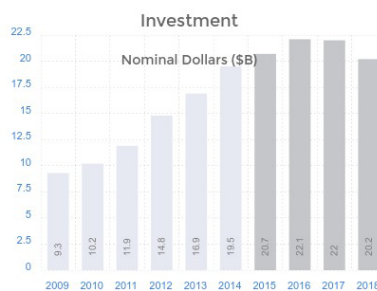
## WHO IS INVESTING IN

### TRANSMISSION?

Future Generating Capacity: Ownership Type



Historical and Projected Transmission Investment



Created by **WIRES**  
Voice of the Electric Transmission Industry

Visit us at: [www.wiresgroup.com](http://www.wiresgroup.com)

Follow us on Twitter:



